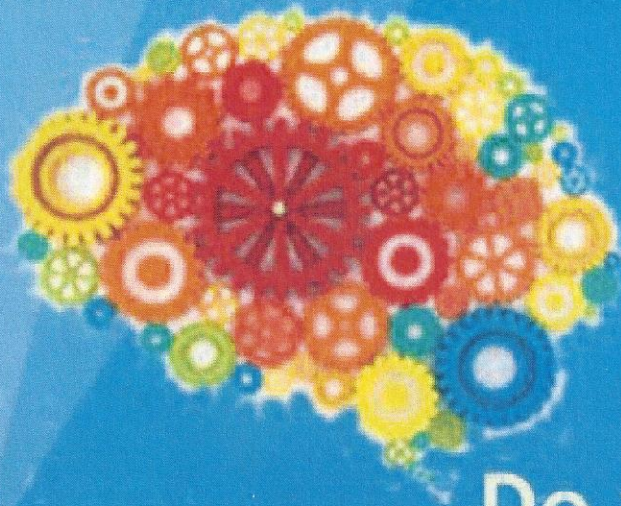


ADOLESCENT BRAIN STUDY



Do you have Schizophrenia, Schizoaffective Disorder or Bipolar Disorder?

CHILDREN WITH A PARENT OR SIBLING DIAGNOSED WITH SCHIZOPHRENIA OR
BIPOLAR DISORDER

AGES 9-16 YEARS OLD

Research study on stress and adolescent brain function.

Cognitive and clinical assessments (3 hours), brain physiology measurements (2-
hours), and brain imaging (4-hours).

There will be follow up visits at 12 and 24 months.

For each session you participate in you will earn \$50. With potential
compensation of up to \$350.

CONTACT US TO SEE IF YOU OR YOUR CHILD WILL QUALIFY